

ADDENDUM NO. 1

City of Mexico Beach  
Phase I Sewer Repairs

**NOTE:** Per the Bid Form, please acknowledge receipt of all Addenda on the Bid Form and include Addenda with bid submittal.

**Question: Bid Item 6 & 7-what diameter pipe is being repaired via the CIPP pt repair**

**Response:** 8" sewer PVC sewer main is being repaired.

**Question: Bid Item 13-approximate length of the CIPP lateral repair from the main to the ROW.**

**Response:** Lengths of CIPP lateral repair from main to ROW will vary. Please use plans (24"x36" paper size) for take off quantities.

**Question: Bid Item 14-is the video inspection to be performed from the main or are cleanouts available for this inspection. BLD can inspect/clean/CIPP all of its work from the main, via access to the manholes on either end of the line segment the laterals are within. We are limited to a length of approximately 50' from the main without a clean out, thus the question above regarding the anticipated length from the main to the ROW.**

**Response:** All laterals called out for video inspection are to be cut, plugged, and stubbed up at R/W line with clean out. Video inspection can be performed from installed cleanout at R/W line toward main. Distances will vary, please refer to plans.

**Question: The Specs say to be submitted 2 weeks in advance, however plans received today.**

**Response:** The 2 weeks in advance requirement is waived. Please note the requirements in Specifications regarding experience in CIPP lining.

**Question: The response time for the bid is short and we ask a postponement be considered.**

**Response:** No postponement of bids will be considered.

**Question: The contract time of 57/77 days is also very short with the sequential nature of sewer rehab work. 90/120?**

**Response:** The Phase I Sewer Repairs is to bring a large section of the City back online for residents that have not had sewer service since the hurricane. Reasonable delays due to materials/weather, etc. may be negotiated during construction and accounted for after bids are received and Notice to Proceed is issued, however, the contract time is firm unless a specific reason is presented to prohibit the time-line for construction.

**Question: Does Appendix A-F need to be included in bid?**

**Response:** Appendices A-F do not have to be submitted with bids. However, these requirements must be met by potential bidder and these documents will be requested prior to Award. Any Contractor who bids the project and cannot meet or fails to provide (immediately after bidding) the requirements of Appendices A-F will not be awarded the project.

**Question: Does "RegROUT MH from top to bottom to seal" mean; lining, structural lining, or just putting 5 minute on walls?**

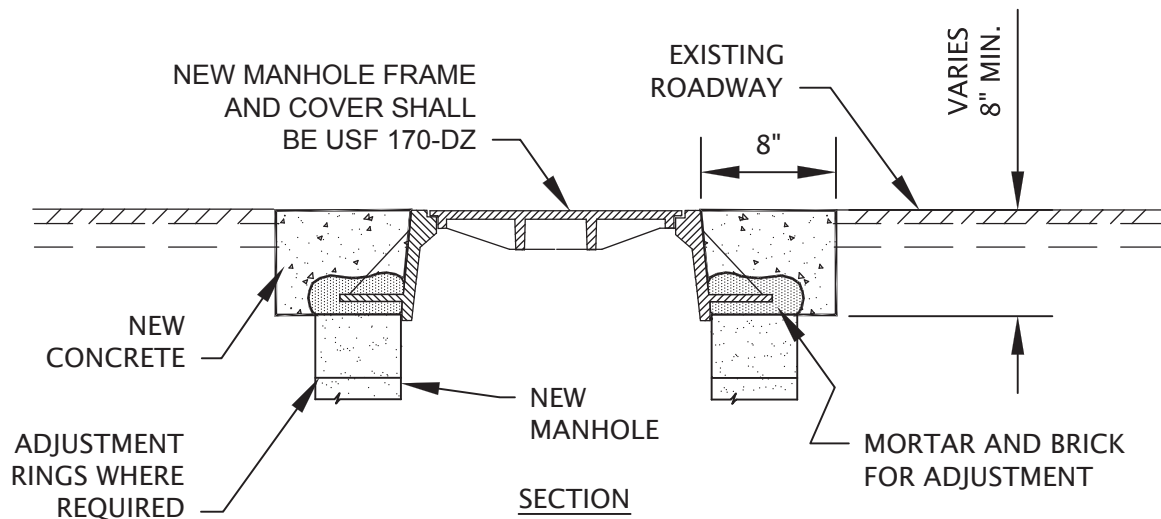
Response: The call out for regROUT is intended to seal manholes after rings and cover have been re-set. Please see Attachment 1 to this Addendum for specifications regarding grout and how to apply it.

**Question: After reviewing the specifications, I see Section 15130 regarding CIPP in gravity sewer pipe. It appears this is referencing the mainline CIPP. Are there specifications regarding the lateral CIPP?**

Response: Please use the specifications in Attachment 2 (or approved equal) included in this Addendum regarding lateral CIPP.

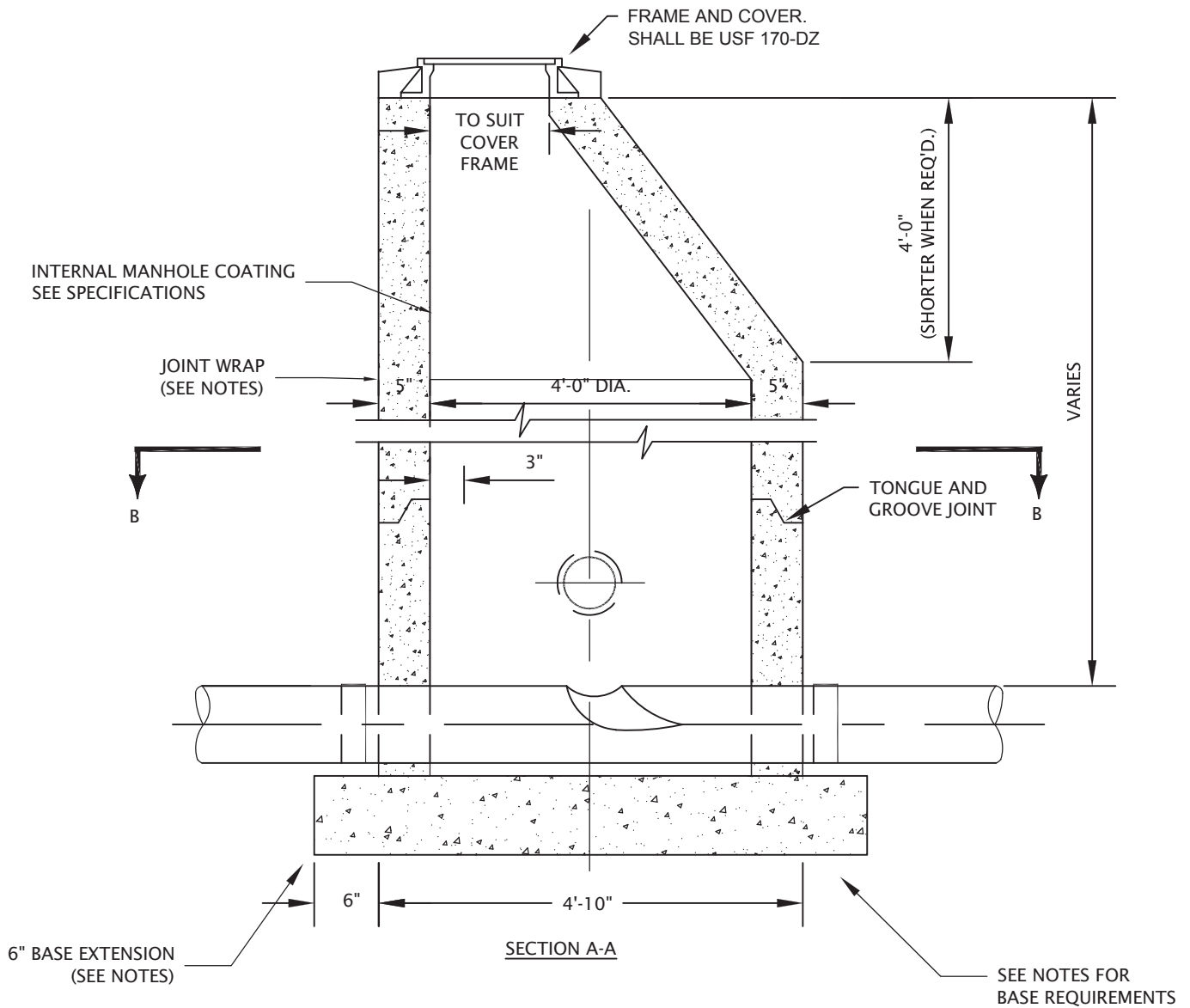
**ATTACHMENT 1**

**SPECIFICATIONS FOR MANHOLE GROUT**



NOTES:

1. THE PORTION OF THE FRAME AND COVER WHICH FORMS THE COVER SEAT SHALL BE MACHINED SO THAT NO ROCKING IS POSSIBLE.
2. MANHOLES INSTALLED IN NON-PAVED AREAS SHALL BE SET SUCH THAT THE COVER IS 3" MIN. ABOVE GRADE UNLESS NOTED OTHERWISE OR DIRECTED IN THE FIELD BY THE ENGINEER.
3. MANHOLES IN PAVED AREAS SHALL BE BROUGHT TO PROPER GRADE AFTER THE PAVING HAS BEEN REPLACED. NEW PAVING SHALL BE CUT AS REQUIRED TO BRING MANHOLE TO GRADE WITH CONCRETE COLLAR TO THE DIMENSIONS SHOWN AND BE ROUND.
4. ALL MANHOLE FRAMES AND COVERS SHALL BE SET TO GRADE AND IN THE SAME PLANE OF THE PAVED SURFACE (NOT NECESSARILY LEVEL).
5. ALL MANHOLES WITHIN THE PROJECT SCOPE WILL RECEIVE A HDPE MANHOLE INSERT AS MANUFACTURED BY "NO FLOW IN FLOW" OR APPROVED EQUAL.



NOTES:

1. MANHOLE SHALL CONFORM TO A.S.T.M. C 478 SECIFICATIONS.
2. JOINTING COMPOUND SHALL BE RAM NECK, TYPE 1, ROPE FROM PLASTIC GASKET OR EQUAL.
3. ALL PATCHING TO BE DONE WITH HYDRAULIC CEMENT. NO MORTAR REPAIRS PERMITTED.
4. MANHOLE PIPE CONNECTION SHALL BE A WATERTIGHT CONNECTION USING TRELLEBORG "KOR-N-SEAL" OR EQUAL.
5. NEW MANHOLES SHALL BE PROVIDED WITH A 6" FLOTATION RING.
6. NEW MANHOLES ARE TO RECEIVE A 12" THICK #57 LIMESTONE FOUNDATION.
7. XYPEX CONCRETE ADMIXTURE SHALL BE USED IN ALL NEW MANHOLES. XYPEX ADMIXTURE SHALL BE C-1000R (RED): 3.5% BY WEIGHT OF PORTLAND CEMENT CONTENT.
8. NEW MANHOLE JOINTS SHALL BE WRAPPED WITH A 9" WIDE BUTYL RUBBER WRAP AS MANUFACTURED BY PRESS-SEAL CORPORATION, SEALING SYSTEMS INC., OR APPROVED EQUAL.
9. EXISTING PIPE EXTENSIONS TO NEW MANHOLES SHALL BE MADE USING A COUPLING MANUFACTURED BY INDIANA SEAL WITH "SHEAR GUARD" OR APPROVED EQUAL.
10. FIELD CORES FOR CONNECTIONS TO EXISTING OR NEW MANHOLES SHALL BE CUT USING A ROTARY CORE DRILL AND SHALL INCLUDE A "KOR-N-SEAL" FLEXIBLE CONNECTION AS MANUFACTURED BY TRELLEBORG OR APPROVED EQUAL.

## MANHOLE DETAIL

**ATTACHMENT 2**

**SPECIFICATIONS FOR LATERAL CIPP**

# SPECIFICATION



## INSTALLATION PRACTICE FOR REHABILITATION OF A SEWER SERVICE LATERAL USING A ONE-PIECE MAIN-TO- LATERAL CURED-IN-PLACE LINER ASSEMBLY

### Section 02770

This document is Confidential Information developed and owned by LMK Technologies. This document is not intended for transmission to, or receipt by, any unauthorized persons. If you have received this document in error, please (i) do not read it, (ii) contact LMK Technologies at 1-815-433-1275 to inform LMK Technologies under what circumstance the message was received, and (iii) erase or destroy the document.

#1557 V.4, 1-4-17 (15-10-479)

Section 02770

## CURED-IN-PLACE PIPE LINING - Laterals

### 1.0 INTENT

1.1 This specification covers material requirements, installation practices, and test methods for the reconstruction of a sewer service lateral pipe and the main connection without excavation. The pipe renovation shall be accomplished by the inversion and inflation of a resin impregnated, single-piece cured-in-place (CIPP) lateral and main connection liner outfitted with engineered, molded hydrophilic gasket seals that are designed specifically for sealing the CIPP/lateral connection interface and lateral termination. When cured, the liner extends over a predetermined length of the service lateral and the full circumference of the main pipe at the lateral connection. The materials and installation practices shall, at a minimum, adhere to the requirements of ASTM F2561-11 "Standard Practice for Rehabilitation of a Sewer Service Lateral and Its Connection to the Main Using a One-Piece Main and Lateral Cured-in-Place Liner"

1.2 This specification takes precedence over any other similar specification that may be found in other sections of the bid documents.

### 2.0 GENERAL

2.1 The reconstruction shall be accomplished using a resin absorbent textile tube of particular length and a thermo-set resin with physical and chemical properties appropriate for the application. The launching device and launching hose is winched through the mainline and positioned at the appropriate service lateral connection. The mainline bladder is inflated seating the hydrophilic molded gaskets and pressing the connection liner against the main pipe at the connection while the lateral tube inverts up into the lateral pipe by the action of the inversion bladder. The resin-saturated liner is cured with the molded gaskets embedded in-place between the host pipe and the new liner, and the inversion bladder and launching device are removed from the pipe.

### 3.0 APPROVED PRODUCTS

***T-Liner® Main-to-Lateral Lining System***

**By LMK Technologies, LLC**

**1779 Chessie Lane**

**Ottawa, IL 61350**

**815-640-9302**

**[www.lmktechnologies.com](http://www.lmktechnologies.com)**

### 4.0 Installer and Product Requirements

4.1 All sewer products must provide a 50 year design life, stamped by a licensed Professional Engineer (P.E.) in order to minimize the owner's long term risk of failure. Only skilled contractors utilizing products that are manufactured in a controlled factory environment with substantial successful long term track records and/or manufacturer's certification of training completion will be considered.

4.2 Product installers must document the following minimum criteria to be deemed commercially acceptable:



<b>Product</b>	<b>Unit</b>	<b>Minimum Requirement for Installer*</b>
Main/Lateral Connections	EA	200
Lateral Liner	LF	250
Lateral Transitions	EA	10

\*Installers who have less than the minimum required installation experience can qualify by employing a Manufacturer's Technical Trainer who meets the requirements.

4.3 For installers to be considered commercially proven, the above referenced minimum number of units of successful wastewater collection system installations must be documented to the satisfaction of the owner to assure commercial viability of the proposed liner system.

4.4 All sewer rehabilitation products submitted for approval must provide third party test results supporting the long term performance and structural strength of the product and such data shall be satisfactory to the owner. Test results are to include the main, laterals, and main/lateral connection materials and hydrophilic molded gasket seals. Test samples shall be prepared so as to simulate installation methods and trauma of the product. No product will be approved without testing verification for all components proposed.

4.5 The Installer (the licensed company or subcontractor bidding) must meet the minimum requirements above or be pre-approved by the owner. This is a company requirement; personal history is valuable, however will not be considered in evaluating the company's ability to meet the minimum requirements of this specification. The Contractor must have installed the same product (in the same constructed configuration) proposed for a minimum of one year. Installers who have less than one year installation experience can qualify by having a manufacturer's representative present during installation.

## 5.0 MATERIAL

5.1 Liner Assembly - The liner assembly shall be continuous in length and consist of one or more layers of absorbent needle punched felt, circular knit or circular braid that meet the requirements of ASTM F1216 and ASTM D5813 Sections 6 and 8. No intermediate or encapsulated elastomeric layers shall be in the textile that may cause delamination in the CIPP. The textile tube and sheet shall be constructed to withstand installation pressures, have sufficient strength to bridge missing pipe segments, and flexibility to fit irregular pipe sections. The resin saturated textile tube and sheet shall meet ASTM F1216, 7.2 as applicable, and the tube shall have 5% to 10% excess resin distribution (full resin contact with the host pipe) that when compressed and cured will meet or exceed the design thickness.

5.2 Mainline Liner Tube - The main liner tube shall be formed from a flat sheet of resin absorbent material suitable for CIPP. The forming of the tube is accomplished by one end of the textile sheet overlapping the second end and sized accordingly to create a circular lining equal to the inner diameter of the lined main pipe. The interior of the textile sheet shall be laminated with an impermeable, translucent flexible membrane. The textile sheet before insertion shall be permanently marked on the membrane as a "Lateral Identification" correlating to the address of the building the lateral pipe provides service.

5.3 Lateral Liner Tube - The exterior of the lateral liner tube shall be laminated with an impermeable, translucent flexible membrane. Longitudinal seams in the tube shall be stitched and thermally sealed. The lateral tube will be continuous in length. The lateral tube will be capable of conforming to offset joints, bends, bells and disfigured pipe sections. For pipe configurations that contain pipe diameter transitions, the transition liner tube must be formed by the manufacturer prior to installation to ensure proper wall thickness per ASTM F1216.

5.4 Mainline Connection - The main tube and lateral tube shall form a one-piece assembly by stitching the lateral tube to the mainsheet aperture. The connecting end of the lateral tube shall be shaped to match the aperture and curvature of the main tube. The lateral tube and main tube shall be sealed by use of a flexible UV cured adhesive/sealant applied in a factory controlled setting. The main/lateral tube assembly shall take the shape of a "TEE" or "WYE" with corresponding dimensions such as a curved circle or a curved elliptical opening in the pipefitting.

5.5 Hydrophilic Gasket Seals - The mainline tube shall include a seamless molded flange shaped (aka Hydrohat) gasket attached to the main liner tube at the connection or four molded hydrophilic O-rings at the mainline termination ends. The gasket(s) must be a minimum of 2.5mm thick and must retain this consistent thickness under installation pressures. The lateral tube shall include two compression molded O-ring gaskets attached six-inches from the terminating end of the lateral tube. The hydrophilic gasket seals must be manufactured in a controlled factory environment with strict quality control and quality assurance protocols. A liquid sealant, adhesives or other fluid like materials having paste like consistency will not be accepted.

5.6 Mainline End Seal Test Data - The hydrophilic gasket seals shall include test data that supports substantial expansion properties so to form a watertight compression end seal at the terminating ends of the CIP-lateral liner. The test protocol shall simulate subterranean conditions and hydraulic loading at surface. Gasket seal submittals must include tests data simulating hydration/dehydration conditions for a period of 10,000-hours and the test results must successfully demonstrate and

document long-term performance without deterioration, loss of material, flexibility, and expansion of the gasket during repeated cycles of hydration and dehydration.

5.7 Bladder Assembly - The liner assembly shall be surrounded by a second impermeable, inflatable, invertible, flexible translucent membrane bladder that will form a liner/bladder assembly. The translucent bladder shall facilitate vacuum impregnation while monitoring the resin saturation process.

## 6.0 RESIN SYSTEM

6.1 The resin/liner system shall conform to ASTM D5813 Section 8.2.2.

6.2 The resin shall be a corrosion resistant polyester, vinyl ester or epoxy resin and catalyst system that when properly cured within the composite liner assembly, meets the requirements of ASTM F1216, the physical properties herein, and those which are to be utilized in the design of the CIPP, for this project.

6.3 The resin shall produce a CIPP, which will comply with the structural and chemical resistance requirements of ASTM F1216.

6.5 CIPP Initial Structural Properties per Table 1

<b>TABLE 1</b>		
<b>PROPERTY</b>	<b>STANDARD</b>	<b>MINIMUM VALUE</b>
Flexural Strength	ASTM D790	4,500 psi (31 MPa)
Flexural Modulus	ASTM D790	250,000 psi (1,724 MPa)

## 7.0 DESIGN CONSIDERATIONS

7.1 The CIPP shall be designed per ASTM F1216, Appendix X1.

7.2 The CIPP design for the lateral tube and main sheet shall assume no bonding to the original pipe.

7.3 The resin saturated lateral tube and the main sheet must place the resin in full contact with the host pipe. The cured liner must provide coating on the interior of the lateral piping for an improved flow rate.

7.4 The liner must be smooth and have an average roughness coefficient “n” factor of 0.013 or lower.

## 8.0 REFERENCES

8.1 ASTM F2561 - Standard Practice for Rehabilitation of a Sewer Service Lateral and Its Connection to the Main Using a One-Piece Main and Lateral Cured-In-Place Liner.

8.2 ASTM F1216 - Standard Practice for Rehabilitation of Existing Pipelines and Conduits by the Inversion and Curing of a Resin-Impregnated Tube.

8.3 ASTM D790 - Standard Test Methods for Flexural Properties of Unreinforced and Reinforced Plastics and Electrical Insulating Materials.

8.4 ASTM D792 - Standard Test Methods for Density and Specific Gravity of Plastics by displacement.

8.5 ASTM D2990 - Standard Test Methods for Tensile, Compressive, and Flexural Creep and Creep-Rupture of Plastics.

8.6 ASTM D5813 - Standard Specification for Cured-in Place Thermosetting Resin Sewer Pipe.

**NOTE:** ASTM F2561-11 references several complementing standards; one of which is ASTM F1216. The ASTM F1216 standard is referenced for purposes of tube design considerations for a CIPP liner. ASTM F1216 is not an applicable standard for the sealing of lateral connections where the lateral CIPP forms a verifiable non-leaking connection to the mainline CIPP. ASTM F2561 is the industry standard for renewing lateral pipes and main/lateral connections using full-hoop CIPP liners and pre-molded compression gaskets.

## 9.0 INSTALLATION RECOMMENDATIONS

9.1 Access Safety - Prior to entering access areas such as manholes, an excavation pit, performing inspection or cleaning operations, an evaluation of the atmosphere to determine the presence of toxic or flammable vapors or lack of oxygen shall be undertaken in accordance with local, state, or federal safety regulations.

9.2 Cleaning and Inspection - As per NASSCO Standards.

9.3 Accessing the Lateral Pipe - A cleanout is strongly recommended and is required to be located on the exterior of the building. The cleanout fitting shall be TEE shaped so to allow upstream and downstream access to the lateral pipe. The cleanout shall be located within two (2) feet of where the finished liner is to terminate. [A cleanout is strongly recommended, to ensure a successful installation and reduce risk of resin slugs, but when installing through a cleanout is not possible, camera access is recommended to ensure proper location and placement of the liner.]

9.4 Plugging – When steaming out of the cleanout, the upstream side of the cleanout shall be plugged during insertion and curing of the liner assembly to ensure no flow enters the pipe and no air, steam, or odors will enter the building. When required, the main pipe flow will be by-passed. The pumping system shall be sized for peak flow conditions. The upstream manhole shall be monitored at all times and an emergency deflating system will be incorporated so that the plugs may be removed at any time without requiring confined space entry.

9.5 Inspection of Pipelines - The interior of the pipeline shall be carefully inspected to determine the location of any condition that shall prevent proper installation, such as roots, severe offsets, and collapsed or crushed pipe sections. Experienced personnel trained in locating breaks, obstacles, and service connections by closed circuit television shall perform inspection of pipelines.

9.6 Line Obstructions - The existing lateral pipe shall be clear of obstructions that prevent the proper insertion and expansion of the lining system. Changes in pipe size shall be accommodated, if the lateral tube is sized according to the pipe diameter and condition. Obstructions may include dropped or offset joints of no more than 20% of inside pipe diameter.

9.7 Resin Impregnation -The liner assembly is encapsulated within the translucent bladder (liner/bladder assembly), the entire liner including the flat sheet shall be saturated with the resin system (wet-out) under controlled vacuum conditions. The volume of resin used shall be sufficient to fill all voids in the textile lining material at nominal thickness and diameter. The volume shall be adjusted by adding 5% to 10% excess resin for the change in resin volume due to polymerization and to allow for any migration of resin into the cracks and joints in the original pipe. No dry or unsaturated area in the mainline sheet or lateral tube shall be acceptable upon visual inspection.

9.8 Liner Insertion -The lateral tube and inversion bladder shall be inserted into the launching hose. The main bladder and flat textile sheet (main liner tube) shall be wrapped around a "T-Launcher" launching device, formed into a tube and secured by use of rubber bands. A seamless molded flange shaped gasket shall be attached to the main liner tube by use of stainless steel snaps. [Alternatively, when the flange shaped gasket is not used, the four hydrophilic O-rings may be used to secure the main bladder and flat textile sheet to the launching device.] The flanged gasket shall be inserted into the lateral pipe at the main/lateral juncture so that the brim of the flanged gasket is firmly seated against the mainline pipe liner. Two hydrophilic O-rings shall be positioned 6-inches from the terminating end of the lateral liner tube one to two inches apart. The launching device is inserted into the pipe and pulled to the point of repair. The pull is complete when the lateral tube is exactly aligned with the lateral pipe connection. The lateral tube is completely protected during the pull. The mainline liner is supported on a rigid T-Launcher device that is elevated above the pipe invert through the use of a rotating skid system. The liner assembly shall not be contaminated or diluted by exposure to dirt or debris during the pull.

9.9 Bladder -The main bladder shall be inflated causing the main sheet to unwrap and expand; pressing the main tube firmly into contact with the main pipe and embedding the flange shaped gasket [or hydrophilic O-rings] between the main tube and the main pipe at the lateral opening. The lateral tube is inverted through the main tube aperture by the action of the lateral bladder extending into the lateral pipe to a termination point that shall be no less than two (2) feet from the exterior cleanout or predetermined termination point. The bladder assembly shall extend beyond each end of the liner, so the liner remains open-ended and no cutting shall be required.

## 10.0 CIPP PROCESSING

10.1 Curing - After the liner has been fully deployed into the lateral pipe; pressure is maintained pressing the liner firmly against the inner pipe wall until the liner is cured at ambient temperatures or by steam. The heating equipment shall be capable of delivering a mixture of steam and air throughout the liner bladder assembly to uniformly raise the liner temperature above the temperature required to cure the resin. The curing of the CIPP shall take into account the existing pipe material, the resin system, and ground conditions (temperature, moisture level, and thermal conductivity of the soil). The heat source temperatures shall be monitored and logged during the cure and cool down cycles. The manufacturer's recommended cure schedule shall be submitted and followed.

10.2 CIPP Processing - Curing shall be complete without pressure interruption with air or a mixture of air and steam for the proper duration of time per the resin manufacturer's recommendations. The curing process is complete when the temperature of the CIPP falls back to 100 degrees Fahrenheit or less.

## 11.0 FINISH

11.1 The Finished CIPP - It shall be a homogenous CIPP liner assembly located at the main/lateral interface and extending into the lateral pipe to the maximum distance of two (2) feet downstream of the outside cleanout [or at the designated termination point if no outside cleanout is available]. The CIPP shall be smooth with minimal wrinkling and shall increase flow rate. The profile of the hydrophilic molded gaskets should be visible and verifiable during post-video inspection on liners 6mm or thinner thickness. The CIPP shall be free of dry spots, lifts, and delamination. The CIPP shall include a textile taper at each end providing a smooth transition to the host mainline liner for accommodating video equipment and maintaining proper flow in the mainline. After the work is completed, the installer will provide the owner with video footage documenting the repair and the visual markings on the CIPP liner assembly identifying the building address. The finished product shall provide a verifiable non-leaking connection between the mainline liner and the CIP-Lateral liner.

## 12.0 RECOMMENDED INSPECTION AND TESTING PRACTICES

12.1 Sampling - As designated in the purchase agreement, the preparation of a CIPP sample is required. The sample shall be prepared by securing a flat plate mold using the textile tube material and resin system as used for the rehabilitated pipe.

12.2 Pressure - The pressure applied on the plate sample will be equal to the normal pressure exerted on the lateral tube during the cure process.

12.3 Length - The minimum length of the sample must be able to produce at least five specimens for testing in accordance with ASTM D790-03.

12.4 Conditioning - Condition the test specimens at  $73.4 \pm 3.6^\circ \text{F}$  ( $23 \pm 2^\circ \text{C}$ ) and  $50 \pm 5\%$  relative humidity for not less than 40 hours prior to test in accordance with Practice ASTM D618, for those tests where conditioning is required.

12.5 Short-Term Flexural (Bending) Properties – The initial tangent flexural modulus of elasticity and flexural stress shall be measured for gravity and pressure pipe applications in accordance with Test Method D790 and shall meet the minimum requirements of Table 1.

12.6 Gravity Pipe Leakage Testing - If required by the owner in the contract documents or purchase order, gravity pipes should be tested using an air test method where a test plug is placed adjacent to the upstream and downstream ends of the main sheet CIPP and at the upper most end of the lateral tube. This test should take place no less than 72-hours after returning the lateral pipe back into service. This test is limited to pipe lengths with no service connections. The test pressure shall be 4-PSI for a test time of three-minutes; the pressure shall not drop below 3.5 PSI.

**13.0 WARRANTY**

13.1 All CIPP liners shall be certified by the manufacturer for specified material properties for the repair. The manufacturer warrants the liner to be free from defects in raw materials for ten years from the date of installation. During the warranty period, any defects which affect the integrity, strength or water tightness of the installed pipe shall be repaired at the contractor's expense.

– END OF SECTION –

## Main-to-Lateral Lining Bid Tab Template

PROJECT:	LOCATON:
SUBMITTED BY:	
DATE:	

Line Item	<u>Description</u>	<u>Qty</u>	<u>Unit</u>	<u>Unit Cost</u>	<u>Subtotal</u>
1	Mobilization		LS	\$	\$
2	Traffic Control Greater than signs and cones		LS	\$	\$
3	Mainline bypass pumping greater than 3"		EA	\$	\$
4	Lateral Clean / Video Inspection from a cleanout (max 1/2 hour)		EA	\$	\$
5	Heavy Cleaning Lateral (in addition to line 4)		HR	\$	\$
6	Heavy Cleaning Main (more than three passes with a jetter)		HR	\$	\$
7	Manhole (MH) Setup		EA	\$	\$
8	6" Diameter Main/Lateral Connection with 4" or 6" Lateral Diameter Lining up to 5 feet in length		EA	\$	\$
9	8" - 12" Diameter Main/Lateral Connection with 4" or 6" Lateral Diameter Lining up to 5 feet in length		EA	\$	\$
10	15" - 21" Diameter Main/Lateral Connection with 4" or 6" Lateral Diameter Lining up to 5 feet in length		EA	\$	\$
11	24" Diameter Main/Lateral Connection with 4" or 6" Lateral Diameter Lining up to 5 feet in length		EA	\$	\$
12	Lateral Lining Shot terminating in manhole, 4" or 6" lateral diameter, up to 5 feet in length		EA	\$	\$
13	Additional 4" M-to-L Lateral Lining Footage greater than 5 Foot		LF	\$	\$
14	Additional 6" M-to-L Lateral Lining Footage greater than 5 Foot		LF	\$	\$
16	Lateral Transitions		EA	\$	\$
17	Mainline Manhole Drops 8" to 12" Diameter Lining up to 5 feet in length		EA	\$	\$
18	Mainline Manhole Drops 8" to 12" Diameter Lining greater than 5 feet in length		LF	\$	\$
19	Mainline Patch Repair to cover abandoned service laterals		EA	\$	\$
20	Vac-A-Tee® Cleanout Installation 0-6 ft. deep, placed in soil		EA	\$	\$
21	Vac-A-Tee® Cleanout Installation 7-12' ft. deep, Placed in soil		EA	\$	\$
22	Vac-A-Tee® Cleanout Installation Placed in Concrete or Asphalt (in addition to lines 20 & 21)		EA	\$	\$
23	Lateral Launch from the main (independent of lining or cleanout installations)		EA	\$	\$
<b>Grand Total</b>					<b>\$</b>